



Risk MAP Progress Website

The Risk Mapping, Assessment, and Planning (Risk MAP) Progress Website is an interactive geoportal that was developed to provide transparency and communicate FEMA’s investments towards achieving its vision and goals for Risk MAP. The FEMA Risk MAP Progress website is accessible from the Risk MAP webpage, <http://www.fema.gov/risk-mapping-assessment-planning> or by accessing the site directly at <http://riskmapprogress.msc.fema.gov>.

Building on the reporting tools and reports developed during Flood Map Modernization (Map Mod) to track program progress, FEMA has enhanced the reporting mechanisms to account for new Risk MAP projects. Traditionally, project types and investments were displayed through static maps and tables with the annual Progress Report and Production Plan. In an effort to improve access and usability, as well as to include Risk MAP projects, the Risk MAP Progress Website was developed. It provides stakeholders an interactive and geospatial means to retrieve information related to Risk MAP and Map Mod projects.

The Risk MAP Progress Website displays projects that have been funded across the Nation and provides users with the ability to drill down to a specific Region, State, or County. Users may filter and export data by the Fiscal Year (FY) a project was funded or by specific project types, which include watershed, coastal, levee, other riverine, and elevation projects. The project data shown within the website is updated after each FY quarter. For more information, please see the user guide available from the Help button on the Risk MAP Progress Website toolbar.



Risk MAP Vision

Deliver quality data that increases public awareness and leads to action that reduces risk to life and property.

What is the Risk MAP Progress Website?

An interactive geoportal that was developed to provide transparency and communicate FEMA’s investments towards achieving its vision and goals for Risk MAP.

Where can I find the Risk MAP Progress Website?

riskmapprogress.msc.fema.gov

What information does the Risk MAP Progress Website provide?

Risk MAP projects are displayed by type across the Nation, with the ability to drill down to a specific Region, State or County. The project types displayed include:

- Watershed,
- Coastal,
- Levee,
- Other riverine, and
- Elevation projects.

Additional project summary information is also available, such as, project name and the FY of preliminary and effective map issuance.

Who can use the Risk MAP Progress Website?

The Risk MAP Progress Website is publicly available and can be used by anyone.

RiskMAP
Increasing Resilience Together

Easily Accessible

The Risk MAP Progress Website can be accessed two ways through <http://www.fema.gov/risk-mapping-assessment-planning> or directly at <http://riskmapprogress.msc.fema.gov>. There are no access restrictions to the site, so it is easily accessible to the whole community, including all those interested in obtaining information on project progress.

Key Features

For more information, please access the Help Text made available wherever the Help Icon is located.

The Risk MAP Progress Website builds upon past progress reporting by combining data with the interactive functionality of a geographic information system (GIS), resulting in dynamic reporting. Users can control what they see on the map graphic and the data shown in tables. Key features include:

- The **Legend** lists the Risk MAP project layers (watershed, levee, coastal, and other riverine) and Map Mod project layers (ongoing, preliminary, effective, and not planned) available for display. In addition, layers are also available to display elevation data collected by FEMA and the Nation's watersheds, counties, and Congressional districts.
- **Filters** appear within the Risk MAP Progress Report toolbar and allow the user to filter by FEMA Region, State, County, and Fiscal Year Funded.
- The **map**, fills the webpage and displays geospatial project footprints based on the selections made in the table of contents and filters.
- When a user clicks on a project footprint, data for that project will appear in a **Project Summary**.
- Based on the filtered criteria, **Project Detail** tabs populate project information in a tabular format.
- Data can also be exported using the **Excel** button on the toolbar is based on filtered selections and can be saved, emailed, and/or printed.
- A **report** can be created from the **PDF** button located on the toolbar. The report is based on filtered selections and can be saved, emailed, and/or printed.

Risk MAP Progress Website
<http://riskmapprogress.msc.fema.gov>

Benefits

- Informs public stakeholders of Risk MAP projects.
- Facilitates collaboration.
- Allows end users to interactively access data of specific interest to them.
- Streamlines and integrates data, resulting in more efficient reporting.
- Utilizes existing data sources.

Automated Process

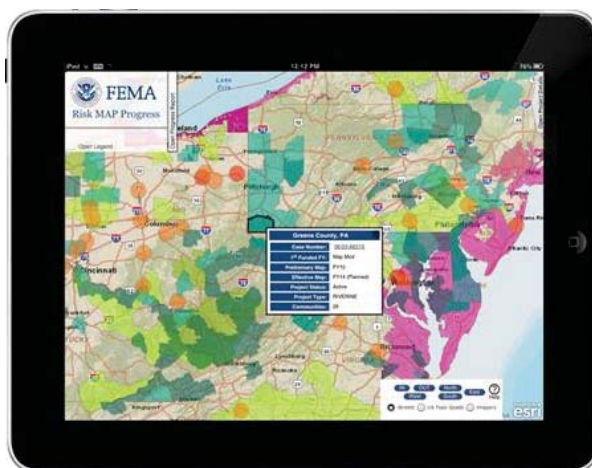
Past reporting efforts relied on manual processes that required significant data validation efforts. The Risk MAP Progress Website pulls data directly from authoritative sources of information and efficiently provides project information on Risk MAP investments.

Quarterly Data Updates

Progress reporting has historically been provided on an annual basis. Since the Risk MAP Progress Website uses an automated approach to gathering data, updates will be more efficient. The website will be updated with new data on a quarterly basis by FY (October 1 – September 30). This will allow stakeholders to view new projects funded throughout the FY, as well as updated project information.

User Feedback/Room for Growth

FEMA will continue to improve the Risk MAP Progress Website and will utilize user feedback and recommendation as input to any future enhancements. Please email FEMAMapSpecialist@riskmapcds.com with comments or suggestions.



RiskMAP
Increasing Resilience Together